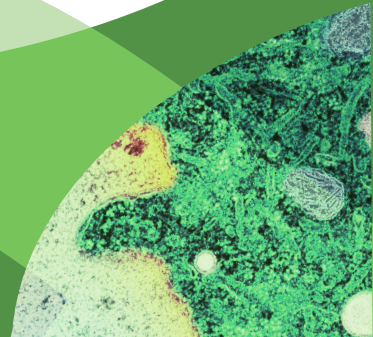


La Jolla
Institute

BONSAI
LEGACY
SOCIETY



MAKE
Life
Without
Disease[®]
PART OF
YOUR LEGACY.



We welcome you to
La Jolla Institute for Immunology's

BONSAI LEGACY SOCIETY

when you let us know you have named LJI as a charitable beneficiary of one of the following:

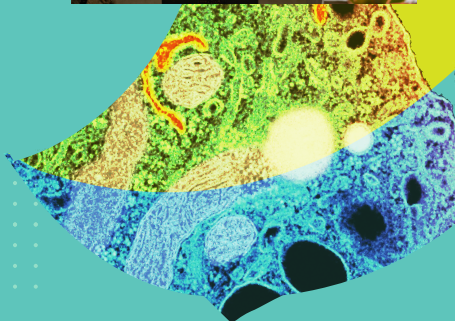
- Will or living trust
- Charitable remainder trust or charitable lead trust
- Qualified retirement plan
- Life insurance policy

Planned gifts in any amount are deeply appreciated and qualify for membership in LJI's **Bonsai Legacy Society**.

There is a special space set aside at La Jolla Institute for Immunology (LJI) where our beloved olive bonsai lives. It was a gift from the family of Frank J. Dixon, M.D., to commemorate his outsized contributions to the field of immunology research and LJI, as a founding member and Chairman of our Board of Directors (1989-2005).

The bonsai art form has been practiced in Chinese and Japanese cultures for many centuries. A bonsai tree is considered a living, growing entity that brings joy and a sense of accomplishment to your life. A bonsai tree will likely outlive you, and it is believed that it will continue to bring joy to others. Bonsais symbolize wealth and abundance, harmony, and balance.

LJI's Bonsai Legacy Society is named in honor of this gift and the family that gave it, as both are represented in the visionary and generous act of leaving a legacy gift to LJI.



BONSAI LEGACY SOCIETY MEMBER BENEFITS

- An invitation to a special year-end luncheon, hosted by LJI's President and CEO, for Bonsai Legacy Society members
- E-newsletters highlighting research updates from the labs at LJI
- Invitations to private events featuring LJI scientists
- Special recognition at events and in LJI materials, including LJI's signature publication, Immune Matters
- A Bonsai Legacy Society welcome gift

BONSAI LEGACY SOCIETY MEMBERSHIP

Members of LJI's Bonsai Legacy Society are among LJI's most important benefactors. Gifts that qualify for LJI's Bonsai Legacy Society create a legacy that will shape the future of the Institute.

LJI's Bonsai Legacy Society honors individuals who share a commitment to the betterment of human health through world-class biomedical research.

If you have any questions about LJI's **Bonsai Legacy Society** or would like to discuss your gift plans, please reach out to:

LJI Advancement Office
(858) 752-6678
plannedgiving@lji.org

More information about planned gifts can be found at lji.org/plannedgiving or by scanning the QR code



OUR FOCUS IS IMMUNOLOGY

We believe that no other biomedical discipline has greater implications for human health than immunology. By unraveling the complexities of the immune system, researchers at La Jolla Institute for Immunology (LJI) are tackling an extraordinarily diverse array of diseases, including cancer, autoimmune diseases, and infectious diseases.

At LJI, every day, our discoveries move the world closer to *Life Without Disease*®. Your support helps us get there.

Find information about the many types of planned gifts that LJI accepts at lji.org/plannedgiving.